

An aerial photograph of a city skyline, likely Chicago, featuring a large stadium with a distinctive white, tent-like roof. The foreground shows a modern multi-story building with a blue and white facade, a parking lot, and a street with several cars. The background is filled with various skyscrapers under a blue sky with scattered clouds.

TIRZ 15

A Walkthrough of completed,
active, & future projects

TIRZ 15/East Downtown Redevelopment Authority Community Briefing

February 12, 2020

6:00PM Program Begins

WELCOME

Gordon Quan (Chair)

INTRODUCTION

Sherry Weesner (Administrator)

PROJECT BRIEFING - A walkthrough of TIRZ 15 completed, active, & future projects

Kyle Macy, P.E. (District Engineering Consultant)

INTRODUCTION to Moderator Stations

Sherry Weesner

*Event ends at 7:00PM

Venue

**BBVA Compass Stadium
Press Room**

2200 Texas Avenue | Houston,
Texas 77003

For the latest information regarding
the North Houston Highway
Improvement Project (NHHIP) -
Segment 3, please visit the website at
<http://www.ih45northandmore.com>

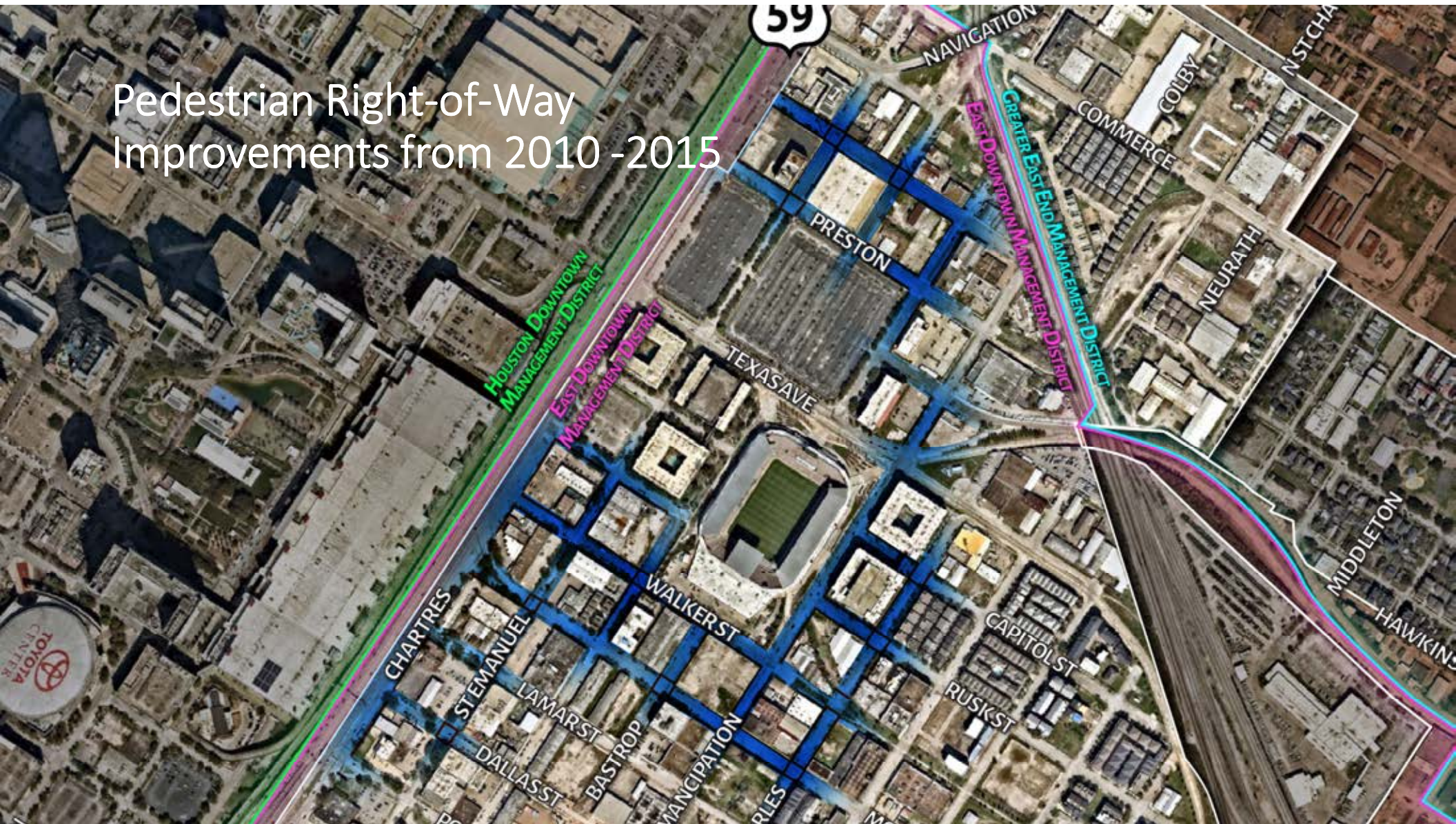
Materials from workshops available
on City's website at
<http://www.houstontx.gov/planning/nhhip/index.html>

Online survey open until this Friday,
February 14th
<https://www.surveymonkey.com/r/MTHBX55>

TIRZ 15 Boundary Map



Pedestrian Right-of-Way Improvements from 2010 -2015



TIRZ 15 Pedestrian Realm and Roadway Improvements near Dynamo Stadium

**Bastrop and McKinney
Before**



**Bastrop and McKinney
After**



TIRZ 15 Pedestrian Realm and Roadway Improvements near Dynamo Stadium

**Chartres and Rusk
Before**



**Chartres and Rusk
After**



TIRZ 15 Pedestrian Realm and Roadway Improvements near Dynamo Stadium

Congress near Bastrop

Before



Congress near Bastrop

After



TIRZ 15 Pedestrian Realm and Roadway Improvements near Dynamo Stadium

St. Charles looking North from McKinney

Before



St. Charles looking North from McKinney

After



TIRZ 15 Pedestrian Realm and Roadway Improvements near Dynamo Stadium

St. Emanuel between Rusk and Walker
Before



St. Emanuel between Rusk and Walker
After



An aerial photograph of a city block. A green outline highlights a specific area in the center of the block, which contains several buildings and some open lots. The surrounding area includes a large stadium-like building on the left, a multi-lane highway running vertically, and various other commercial and residential buildings. The text is overlaid on the top half of the image.

TIRZ 15 Phase 1 Reconstruction Area

INVESTMENT Approx. \$7 Million

TIRZ 15 Phase One Reconstruction

Example of Area Conditions Prior to Reconstruction Activity

Conditions that promoted this project

- Safety
- Mobility
- Storm Water Management
- Economic Development

Lamar – Looking East between Hutchins and Emancipation



TIRZ 15 Phase One Reconstruction

Lamar After Reconstruction Activity



Condition Improvements

- Upgraded Stormsewer
- Upgraded Water and Sanitary
- Upgraded Street Conditions with on-street parking and signage
- ADA compliant, SAFE pedestrian realm with ADA accessibility at corners
- Reconstruction of obstacles within the ROW
 - Installation of concrete power poles which reduced wooden poles

TIRZ 15 Phase One Reconstruction

**Northside of Lamar Prior to
Reconstruction Activity**



After Improvements



TIRZ 15 Phase One Reconstruction

**Hutchins looking North from Lamar
towards McKinney, Prior to Reconstruction
Activity**



Hutchins after Improvements



TIRZ 15 Phase One Reconstruction

**Hutchins looking South towards Dallas
Prior to Reconstruction Activity**



After Improvements



TIRZ 15 Phase One Reconstruction

Bastrop Greenspace After Improvements



TIRZ 15 – Phase 1 Reconstruction Amenity Overlay

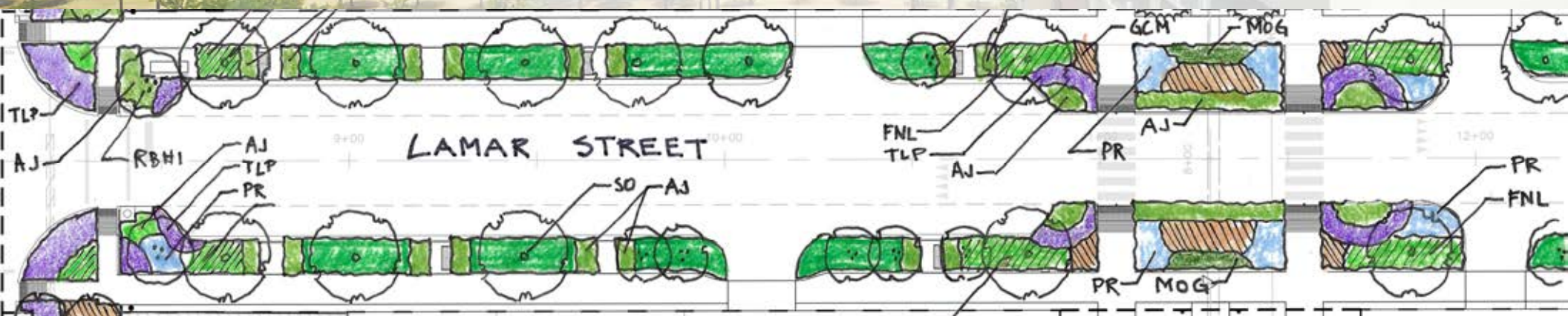
Amenity Improvements

Working with the East Downtown Management District

- Pedestrian Lighting
- Benches
- Trashcans
- Bike racks

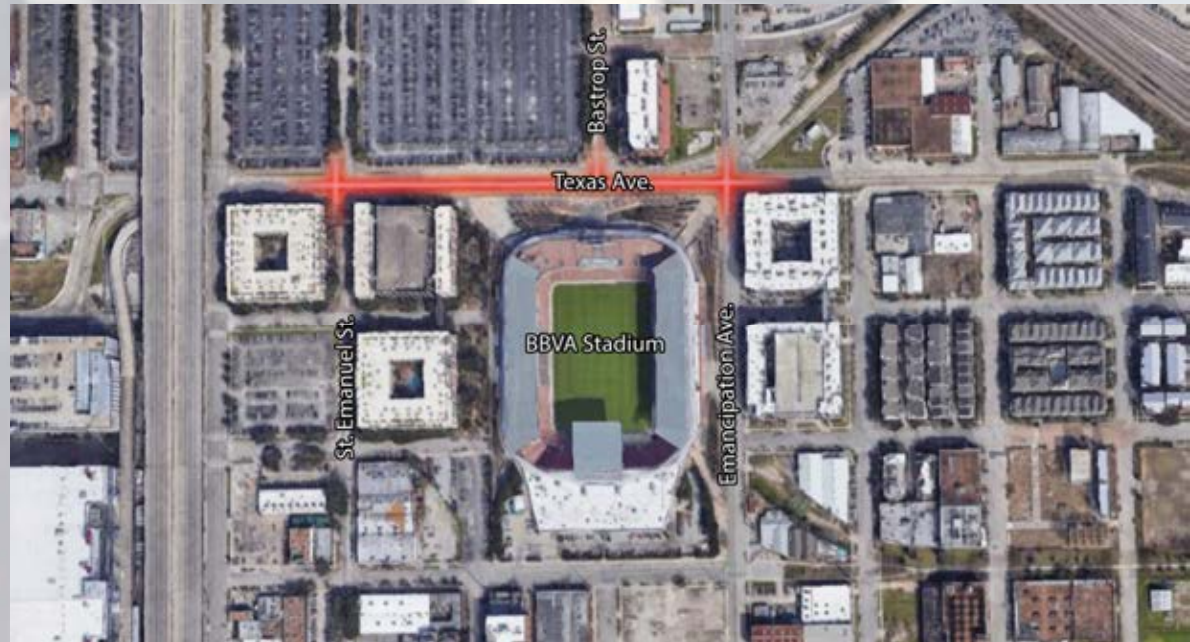
Trees!

- ROW trees and other shade trees will be installed now as part of this Amenity Overlay Package.



Texas Avenue Mobility Improvements

- Recent traffic counts have been taken.
- Currently coordinating with HPW and Metro
 - Examining signal timing and traffic patterns.
 - Improve traffic flow
 - During events
 - During non-peak traffic flow



An aerial photograph of a city grid. A yellow line representing a trail runs horizontally across the middle, starting from the left edge, passing through Walker St, and curving south at the right edge. Labels for streets and a stadium are visible.

Columbia Tap Trail

Texas Ave.

BBVA Stadium

Walker St.

Emancipation Ave.

McKinney St.

Proposed Improvements

- Additional Trees
- Additional Lighting
- Benches where there are none

Look Ahead

HARRISBURG
TIRZ 23



TIRZ 15/East Downtown Redevelopment Authority Community Briefing

February 12, 2020

6:00PM Program Begins

WELCOME

Gordon Quan (Chair)

INTRODUCTION

Sherry Weesner (Administrator)

PROJECT BRIEFING - A walkthrough of TIRZ 15 completed, active, & future projects

Kyle Macy, P.E. (District Engineering Consultant)

INTRODUCTION to Moderator Stations

Sherry Weesner

*Event ends at 7:00PM

Venue

**BBVA Compass Stadium
Press Room**

2200 Texas Avenue | Houston,
Texas 77003

For the latest information regarding
the North Houston Highway
Improvement Project (NHHIP) -
Segment 3, please visit the website at
<http://www.ih45northandmore.com>

Materials from workshops available
on City's website at
<http://www.houstontx.gov/planning/nhhip/index.html>

Online survey open until this Friday,
February 14th
<https://www.surveymonkey.com/r/MTHBX55>